



INVERSYS DPR SERIES ROTARY SCREW AIR COMPRESSORS



STANDARD EQUIPMENT

High quality components such as IP55 electric motors with the IE3 efficiency class, IP54 fan motors, star-delta motor starter system, electrical materials selected according to IEC, UL/cUL, CE standards as per the market requirements, high-efficiency screw blocks consuming less energy are provided as standard in all our products.



SERVICEABILITY

Service-friendly design implemented using a layout that provides instant access to all consumable items, with quick-release protective covers and easy-to-use controllers minimizes downtime and reduces maintenance costs.



ELECTRONIC CONTROL

Dalgakıran screw type compressors are equipped with easy-to-use, durable and long-lasting microprocessor controllers with communication capabilities as per the product line to ensure smooth operation and uninterrupted production.



SCREW BLOCK

Patented durable screw block which can supply the system with air in high-capacity and has been specially selected according to each model's requirements
Production of air with less loss of air thanks to the new rotor profiles, and lower torque requirements
New generation bearing design with increased load carrying capabilities



AIR OIL SEPARATOR

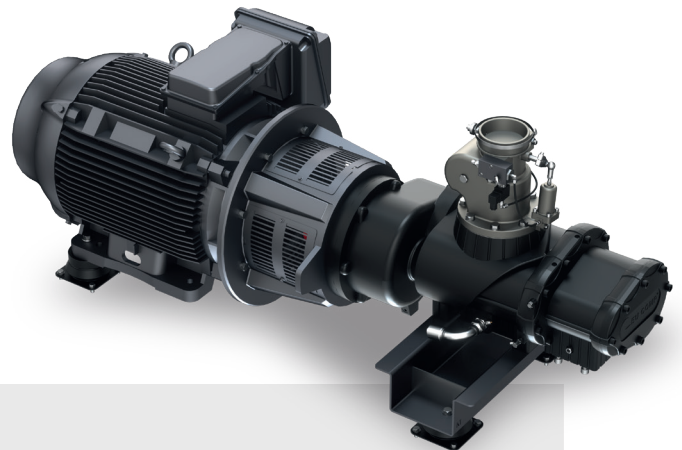
Immersed type separator

High performance separation with three-stage design
More effective separation in lower volume via deep-wound interlocking separation segments
Low amount of oil mist in outlet air ≤ 3 ppm



MAIN MOTOR AND DRIVE SYSTEM

High efficiency 400V/3 phase/50Hz,
F-class insulation
IP55 electric motors with F protection class
Direct coupled models (1:1 drive)
Long lasting and efficient power transfer thanks to the use of elastic coupling
Engine designs fashioned in compliance with the load characteristic





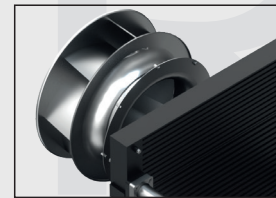
INVERSYS DPR SERIES Rotary Screw Air Compressors

DALGAKIRAN INVERSYS DPR series variable-speed compressors drive the motor with the frequency converter to adjust the compressor operation speed according to your requirements and save up to 35 % energy. Thanks to its high-quality equipment and excellent engineering in its design, it provides a very efficient and flexible use as per requirements. Responds to all requirements between 18 and 315 kW.

DALGAKIRAN DPR series compressors are designed with a compressor design in compliance with European energy efficiency directives (2009/125/EC).

MAIN MOTOR AND DRIVE SYSTEM

- IE3 Efficiency class (with IE4 option)
- Motors with class B temperature increase
- Motor design suitable for 50 °C ambient temperature
- 50/60 Hz - 380/400/230 V



ADVANTAGES

- Low vibration
- Cools designs with high cooling capacity
- Overhead exhaust air outlet design in all models
- Easy access thanks to the service doors that can be opened sideways
- Multiple-machine control feature (up to 5 machines) (55 kW and above)

AIR/OIL SEPARATOR

- 3 stage oil and air separation
- Low pressure drop
- Immersed type separator
- Long service life



COOLING SYSTEM

- Efficient cooling
- Low speed radial fan (18.5-160 kW)
- High efficiency impeller design with backward curved impeller
- Design suitable with high ambient temperatures (46 °C)
- Cooler design with reduced thermal stress
- High back-pressure resistance
- Low sound level
- Inverter controlled fan (above 30 kW)

TECHNICAL DATA

Model	Pressure		Capacity*				Motor Power kW/HP	Connection Size	Dimensions (mm)			Weight kg	Noise** dB(A)
			Maximum		Minimum				Length	Width	Height		
	bar	psi	m ³ /min	cfm	m ³ /min	cfm							
INVERSYS DPR 18	7.5	110	3.60	127	0.80	28	18/25	G 1"	1600	833	1385	610	71
	8.5	125	3.20	113	0.79	28							
	10	145	2.96	105	0.77	27							
	13	185	2.47	87	0.76	27							
INVERSYS DPR 22	7.5	110	4.27	151	0.80	28	22/30	G 1"	1600	833	1385	655	71
	8.5	125	3.81	135	0.79	28							
	10	145	3.63	128	0.77	27							
	13	185	3.10	110	0.76	27							
INVERSYS DPR 30	7.5	110	5.86	207	1.04	37	30/40	G 1 1/4"	2025	1130	1635	1030	73
	8.5	125	5.20	184	1.03	36							
	10	145	4.91	173	1.02	36							
	13	185	4.22	149	1.00	35							
INVERSYS DPR 37	7.5	110	7.39	261	1.41	50	37/50	G 1 1/4"	2025	1130	1635	1325	74
	8.5	125	6.58	232	1.40	49							
	10	145	6.23	220	1.37	48							
	13	185	5.41	191	1.36	48							
INVERSYS DPR 45	7.5	110	9.34	330	2.56	90	45/60	G 1 1/4"	2025	1130	1635	1545	75
	8.5	125	8.42	297	2.52	89							
	10	145	7.94	280	2.46	87							
	13	185	6.59	233	2.39	84							
INVERSYS DPR 55	7.5	110	11.02	389	2.56	90	55/75	G 2"	2313	1350	2085	2060	75
	8.5	125	9.86	348	2.52	89							
	10	145	9.46	334	2.46	87							
	13	185	7.91	279	2.39	84							
INVERSYS DPR 75	7.5	110	14.6	517	5.00	177	75/100	G 2"	2313	1350	2085	2270	77
	8.5	125	13.0	460	4.93	174							
	10	145	12.3	434	4.77	168							
	13	185	10.7	377	4.75	168							
INVERSYS DPR 90	7.5	110	18.7	659	6.76	239	90/125	G 2"	2800	1600	2250	3050	79
	8.5	125	16.3	576	6.69	236							
	10	145	15.5	546	6.58	232							
	13	185	12.9	456	6.25	221							
INVERSYS DPR 110	7.5	110	22.4	791	6.76	239	110/150	G 2"	2800	1600	2250	3175	79
	8.5	125	19.7	695	6.69	236							
	10	145	18.8	664	6.58	232							
	13	185	15.9	562	6.25	221							
INVERSYS DPR 132	7.5	110	27.2	959	8.30	293	132/180	G 2"	2800	1600	2250	3455	81
	8.5	125	23.8	839	8.10	286							
	10	145	22.5	793	8.00	283							
	13	185	19.6	692	7.90	279							
INVERSYS DPR 160	7.5	110	34.1	1205	12.7	449	160/220	G 2 1/2"	2950	1700	2250	3885	81
	8.5	125	29.6	1046	12.4	438							
	10	145	27.7	978	12.2	431							
	13	185	22.6	796	12.0	424							
INVERSYS DPR 200	7.5	110	40.4	1427	10.6	373	200/270	DN80	3530	2260	2465	4485	83
	8.5	125	36.6	1293	10.4	367							
	10	145	33.3	1177	10.2	361							
	13	185	30.1	1064	9.99	353							
INVERSYS DPR 250	7.5	110	49.1	1734	10.6	373	250/340	DN80	3530	2260	2465	4915	83
	8.5	125	45.0	1589	10.4	367							
	10	145	41.2	1456	10.2	361							
	13	185	37.6	1328	9.99	353							
INVERSYS DPR 315	7.5	110	62.3	2202	11.8	417	315/430	DN100	3530	2260	2465	5175	84
	8.5	125	56.5	1995	11.6	410							
	10	145	51.7	1826	11.4	403							
	13	185	47.0	1661	11.2	394							

- Unit performances measured in reference conditions which are 1 bar absolute air pressure, %0 relative humidity, 20°C inlet air temperature, 71°C thermostatic valve set temperature and use of Smartoil.

- DALGAKIRAN reserves its rights to make changes in its products and specifications without prior notice.

* Refers to free air delivery measured according to ISO 1217:2009, Annex C standard.

** Refers to sound pressure level measured according to ISO 2151:2004 and ISO 9614/2 with ± 3 dB(A) tolerance.